



Flat 7 Breckhill Road, Nottingham, NG3 5JP

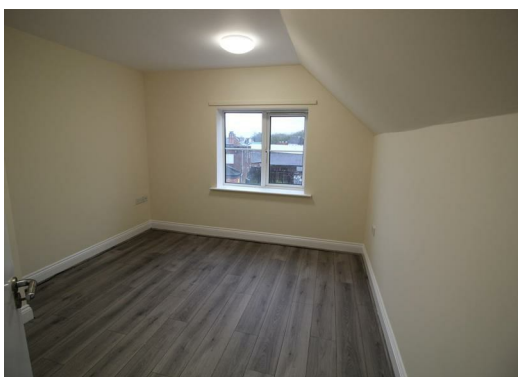
£725 Per Month



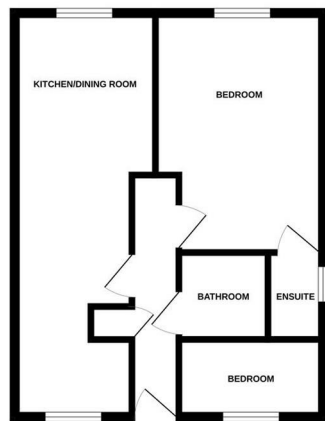
Tetris are delighted to present to the rental market this two bedroom first floor apartment in the heart of cosmopolitan Mapperley, an extremely sought after area. The apartment is walking distance to all the shops, bus routes, lovely eateries and cafes.

The property briefly comprises of a kitchen / lounge, two bedrooms, the master bedroom benefiting from an en suite with an electric shower and a separate bathroom with a bath and shower. Electric heating throughout.

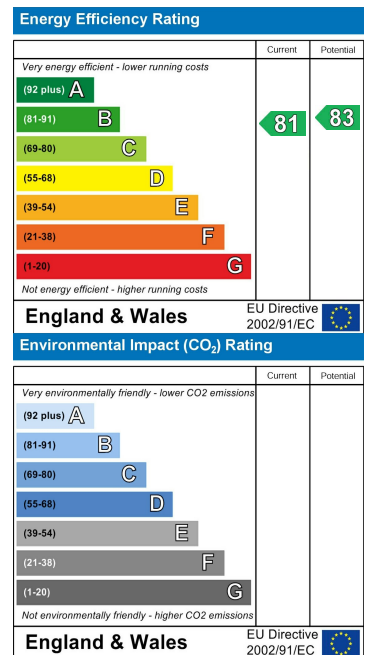
This property is also available fully furnished at a rental cost of £725 pcm.



GROUND FLOOR
433 sq.ft. (40.3 sq.m.) approx.



TOTAL FLOOR AREA - 433 sq.ft. (40.3 sq.m.) approx.
While every attempt has been made to ensure the accuracy of the floorplan, the floorplan is not intended to be a statement of fact. It is a guide only. The floorplan is not intended to be a statement of fact. It is a guide only. The floorplan is not intended to be a statement of fact. It is a guide only.



These particulars, whilst believed to be accurate are set out as a general outline only for guidance and do not constitute any part of an offer or contract. Intending purchasers should not rely on them as statements of representation of fact, but must satisfy themselves by inspection or otherwise as to their accuracy. No person in this firm's employment has the authority to make or give any representation or warranty in respect of the property.